



**REGIONAL SPECIALISED METEOROLOGICAL CENTRE-TROPICAL CYCLONES, NEW DELHI  
TROPICAL WEATHER OUTLOOK**

**DEMS-RSMC SPECIAL TROPICAL CYCLONES NEW DELHI DATED 12.11.2022**

**TROPICAL WEATHER OUTLOOK FOR NORTH INDIAN OCEAN (THE BAY OF BENGAL AND THE ARABIAN SEA) VALID FOR NEXT 120 HOURS ISSUED AT 0600 UTC OF 12.11.2022 BASED ON 0300 UTC OF 12.11.2022.**

**BAY OF BENGAL:**

YESTERDAY'S WELL MARKED LOW PRESSURE AREA OVER SOUTHWEST BAY OF BENGAL & ADJOINING AREAS OF NORTH COASTAL TAMILNADU & PUDUCHERRY WEAKENED INTO A LOW PRESSURE AREA OVER NORTH COASTAL TAMILNADU, PUDUCHERRY & NEIGHBOURHOOD AT 0300 UTC OF TODAY THE 12<sup>TH</sup> NOVEMBER, 2022. IT IS VERY LIKELY TO MOVE WEST-NORTHWESTWARDS ACROSS NORTH INTERIOR TAMILNADU AND KERALA DURING 12<sup>TH</sup> TO 13<sup>TH</sup> NOVEMBER AND EMERGE INTO SOUTHEAST & ADJOINING EASTCENTRAL ARABIAN SEA AS A LOW PRESSURE AREA/ CYCLONIC CIRCULATION ON 13<sup>TH</sup> NOVEMBER, 2022.

ASSOCIATED SCATTERED TO BROKEN LOW AND MEDIUM CLOUDS WITH EMBEDDED INTENSE TO VERY INTENSE CONVECTION LAY OVER SOUTHWEST & ADJOINING WESTCENTRAL BAY OF BENGAL, NORTH TAMILNADU, SOUTH COASTAL ANDHRA PRADESH, SOUTH RAYALASEEMA & NEIGHBOURHOOD. MINIMUM CLOUD TOP TEMPERATURE (CTT) MINUS 93<sup>0</sup>C.

ANOTHER FRESH LOW PRESSURE AREA IS LIKELY TO FORM OVER SOUTHEAST BAY OF BENGAL & NEIGHBOURHOOD AROUND 16<sup>TH</sup> NOVEMBER, 2022.

SCATTERED TO BROKEN LOW AND MEDIUM CLOUDS WITH EMBEDDED INTENSE TO VERY INTENSE CONVECTION LAY OVER WESTCENTRAL & SOUTH BAY OF BENGAL AND ANDAMAN SEA. SCATTERED LOW AND MEDIUM CLOUDS WITH EMBEDDED WEAK TO MODERATE CONVECTION LAY OVER NORTH & EASTCENTRAL BAY OF BENGAL.

**PROBABILITY OF CYCLOGENESIS (FORMATION OF DEPRESSION) DURING NEXT 120 HRS:**

24 HOURS	24-48 HOURS	48-72 HOURS	72-96 HOURS	96-120 HOURS
NIL	NIL	NIL	NIL	NIL

**ARABIAN SEA:**

SCATTERED TO BROKEN LOW AND MEDIUM CLOUDS WITH EMBEDDED INTENSE TO VERY INTENSE CONVECTION LAY OVER EASTCENTRAL ARABIAN SEA OFF KARNATAKA COAST, SOUTH ARABIAN SEA AND LAKSHADWEEP ISLAND AREA. SCATTERED LOW AND MEDIUM CLOUDS WITH EMBEDDED MODERATE TO INTENSE CONVECTION LAY OVER COMORIN AREA AND ISOLATED WEAK TO MODERATE CONVECTION LAY OVER NORTHEAST ARABIAN SEA OFF SOUTH GUJARAT COAST & REST OF EASTCENTRAL ARABIAN SEA.

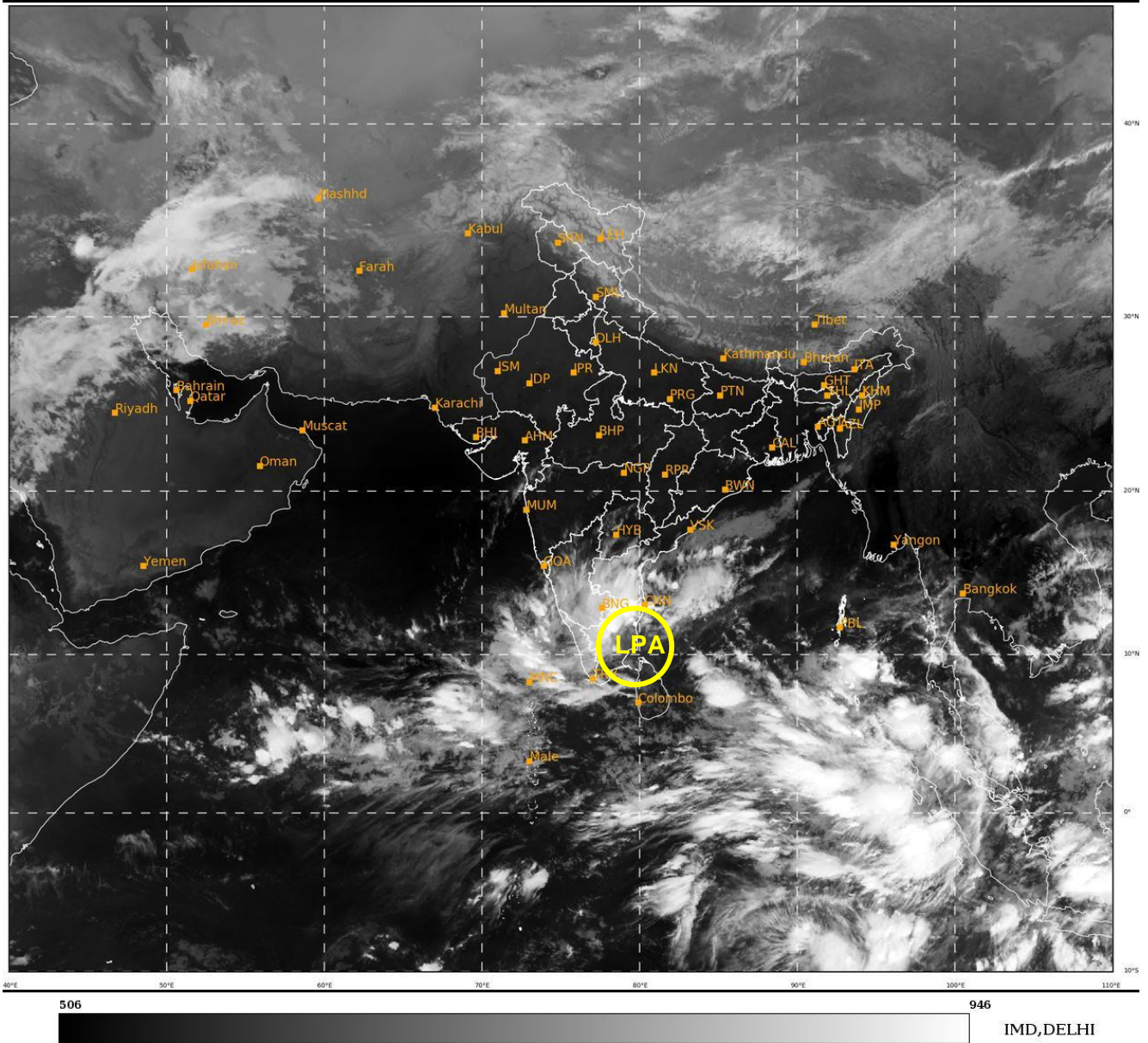
**PROBABILITY OF CYCLOGENESIS (FORMATION OF DEPRESSION) DURING NEXT 120 HRS:**

24 HOURS	24-48 HOURS	48-72 HOURS	72-96 HOURS	96-120 HOURS
NIL	NIL	NIL	NIL	LOW

**REMARKS:** NIL

SAT : INSAT-3D IMG  
 IMG\_TIR1 10.8 um  
 L1C Mercator

12-11-2022/(0300 to 0326) GMT  
 12-11-2022/(0830 to 0856) IST



**LPA: Low Pressure Area**

Cloud distribution: (a) Isolated: <25%, Scattered:25-50%, Broken: 51-75%, Solid:>75%, Convection Intensity: (a) Weak: Cloud Top Temperature (CTT) >-25°C, (b) Moderate: CTT: - 25°C to -40°C, (c) Intense: CTT: - 41°C to -70°C and (d) Very Intense: : Less than -70°C  
**PROBABILITY OF CYCLOGENESIS (FORMATION OF DEPRESSION):** NIL: 0%, LOW: 1-33%, , MODERATE: 34-66% AND HIGH: 67-100%  
 This is a guidance Bulletin for WMO/ESCAP Panel Member countries. Visit respective National websites for Country specific Bulletins